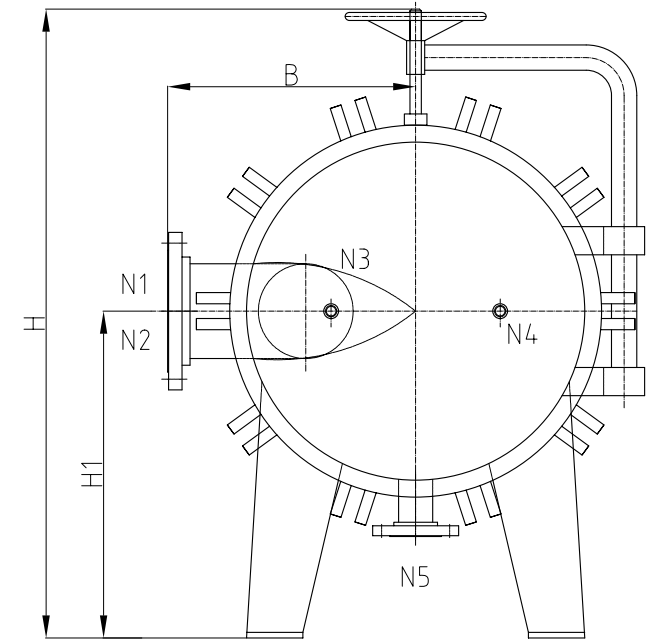
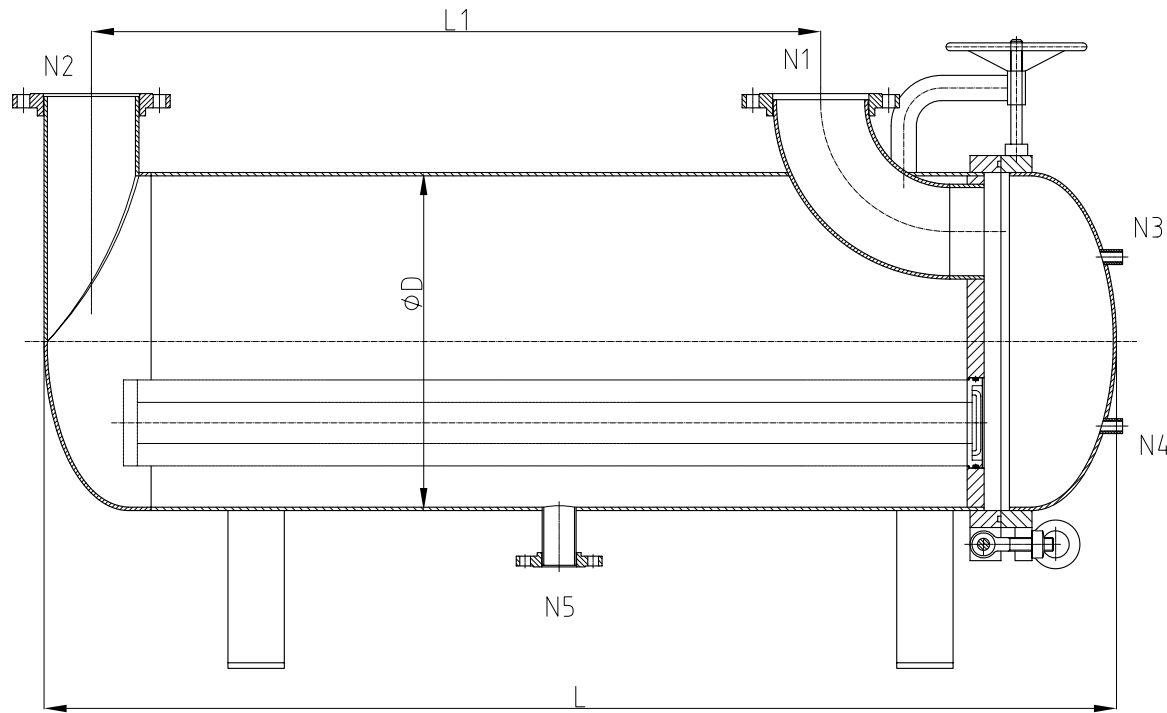


SIZE	N1 / N2	N5	∅D	H	H1	L	L1	B
HF3A60-10-060A	ANSI 6" 150P	ANSI 2" 150P	450	966	505	1828	1276	365
HF4A60-10-080A	ANSI 8" 150P	ANSI 3" 150P	550	1066	555	1903	1276	415
HF7A60-10-100A	ANSI 10" 150P	ANSI 4" 150P	700	1216	630	1953	1123	490
HF9A60-10-100A	ANSI 10" 150P	ANSI 4" 150P	800	1316	680	1985	1123	540
HF14A60-10-160A	ANSI 16" 150P	ANSI 5" 150P	1000	1516	780	2003	1123	640



"A"

"A-A"

## technical data

	vessel	jacket	
design pressure	10		bar
design temperature	120		°C
operating pressure max.			bar
operating temperature max.			°C
test pressure with water 20°C			bar
volume			l

**S E F A R**



draw: JG CHEN

date: 2008.12

appr.

scale:

1:1

drawing no.: HF-090528-2

name:

HF A60 High Flow Cartridge Vessel

MATERIAL CHOICE-SUS304,SUS316

N1/N2 FLANGE CHOICE - DIN,ANSI,JIS

O-RING CHOICE -BUNA,EPDM,VITON,PTFE